

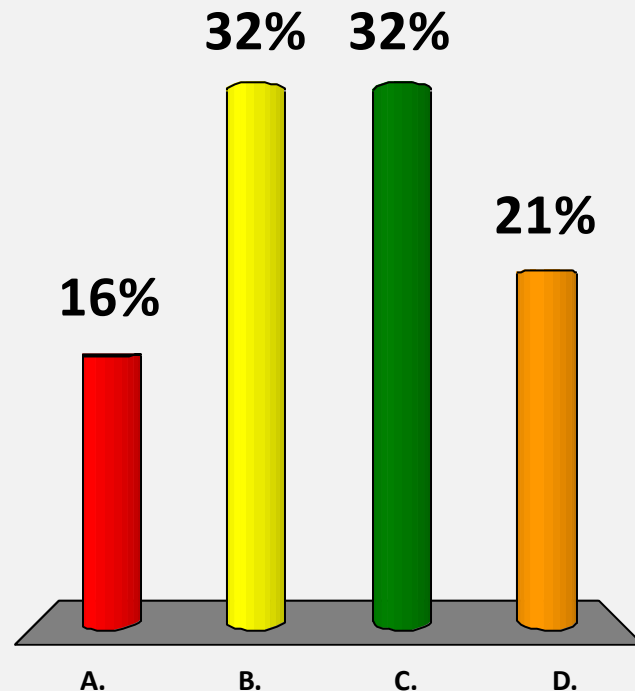
International Symposium on 3D Imaging for Interventional Catheterization in CHD

October 13 – 15, 2016



My cath lab performs 3DRA

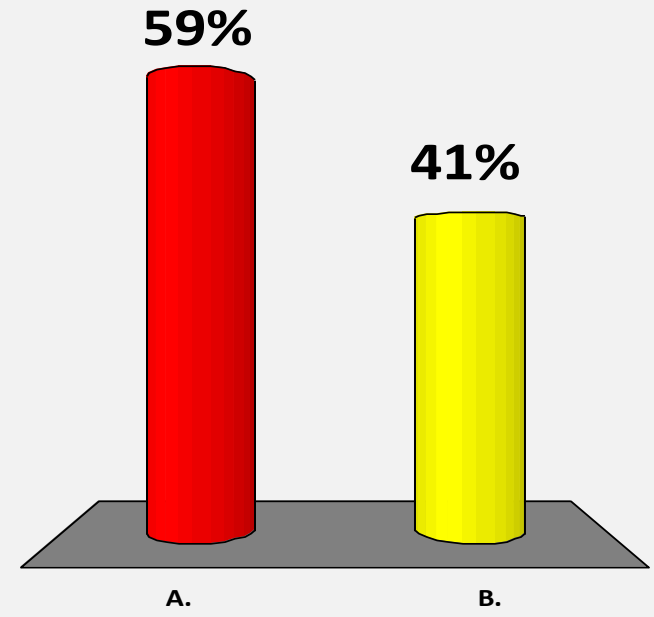
- A. Never
- B. Less than once a week
- C. 1-3 cases per week
- D. >3 cases per week





My Heart Center or Department uses 3D printing for procedural or surgical planning

- A. Yes
- B. No

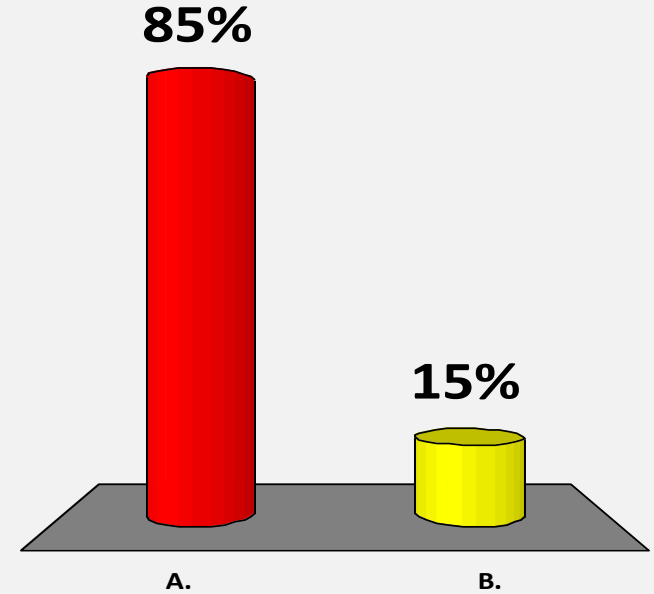




My cardiac MR and CT colleagues routinely provide 3D reconstructions for me

A. Yes

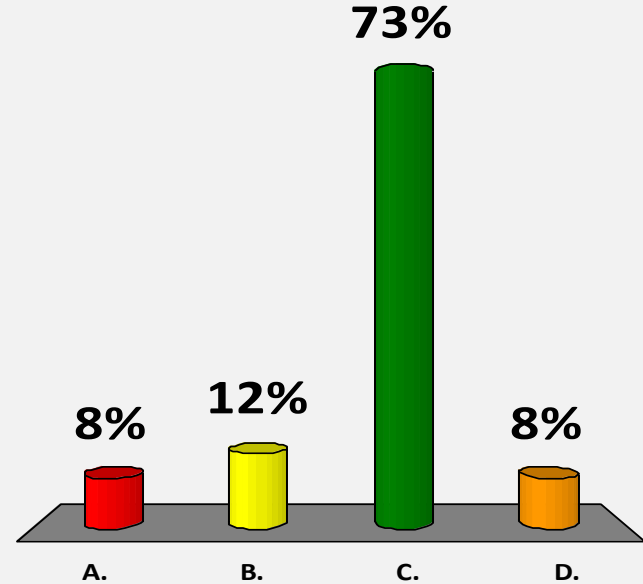
B. No





Our surgeons ask for pre-op 3D imaging

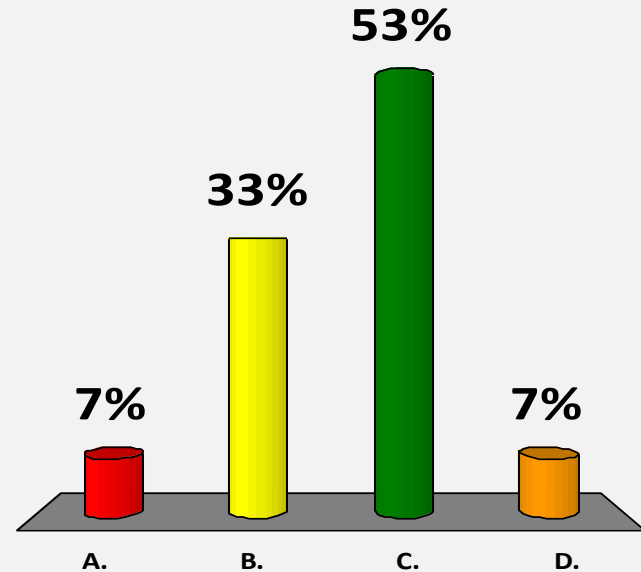
- A. Never
- B. Rarely
- C. Sometimes
- D. Always





My echo colleagues perform 3D TEE

- A. Never
- B. Rarely
- C. Sometimes
- D. Always

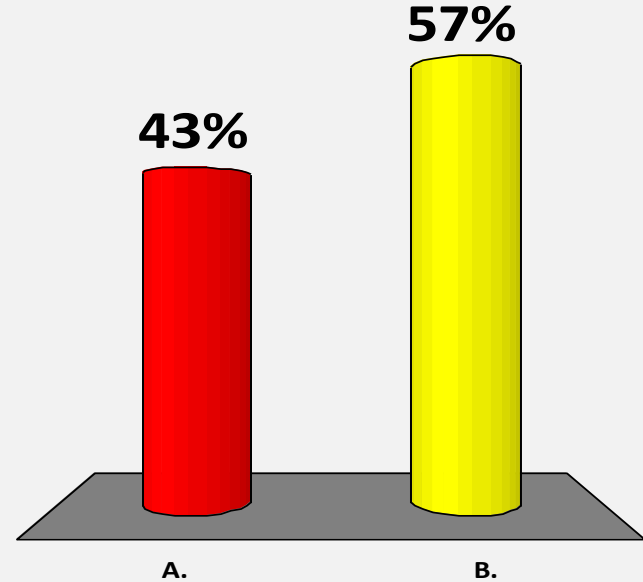




My cath lab uses 3D ICE

A. Yes

B. No

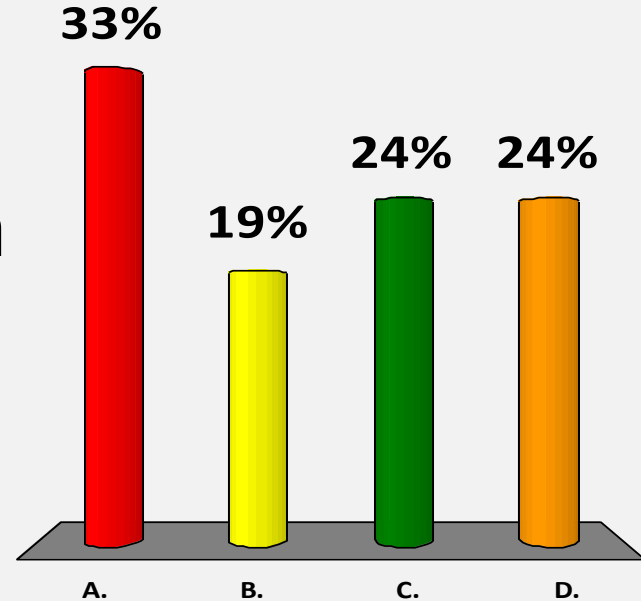


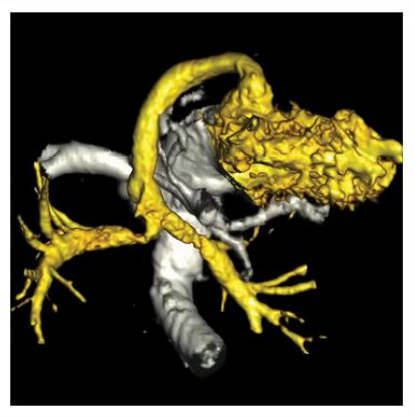
NATIONWIDE CHILDREN'S
When your child needs a hospital, everything matters.™



My cath lab overlays 3DRA on fluoroscopy

- A. Never
- B. Less than once a month
- C. 1-3 times per month
- D. Once a week or more





International Symposium on 3D Imaging for Interventional Catheterization in CHD

October 13 – 15, 2016
